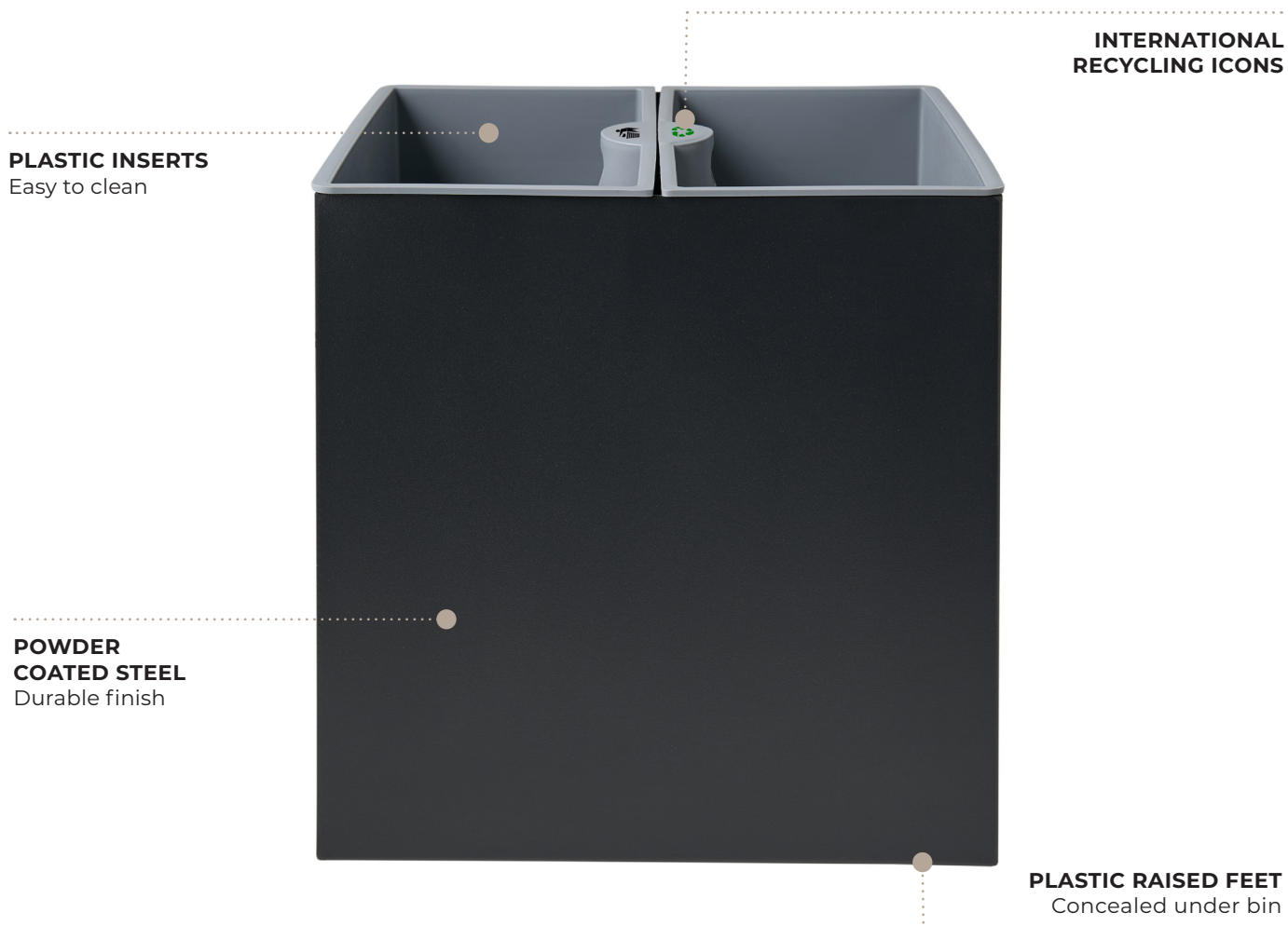


SHEFFIELD

Metal Dual Bin with Plastic Inserts

CORBY



PLASTIC INSERTS
Easy to clean

**INTERNATIONAL
RECYCLING ICONS**

**POWDER
COATED STEEL**
Durable finish

PLASTIC RAISED FEET
Concealed under bin

- Durable steel construction
- Raised plastic feet
- Supplied with plastic recycling inserts
- Concealed bag feature
- Metal finish

Specification

Black
1.49kg
6L + 6L



BRITISH
DESIGNED



DURABLE
FINISH



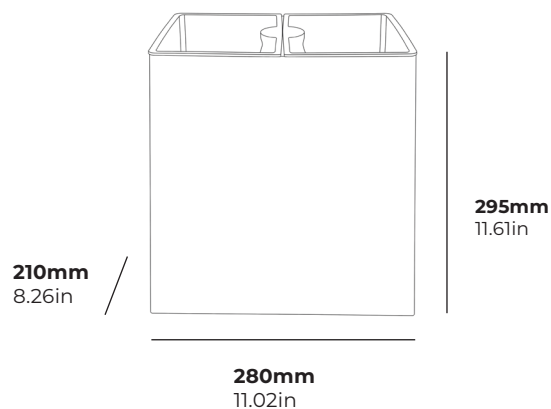
ECO
FRIENDLY



ANTI-SLIP
FEET



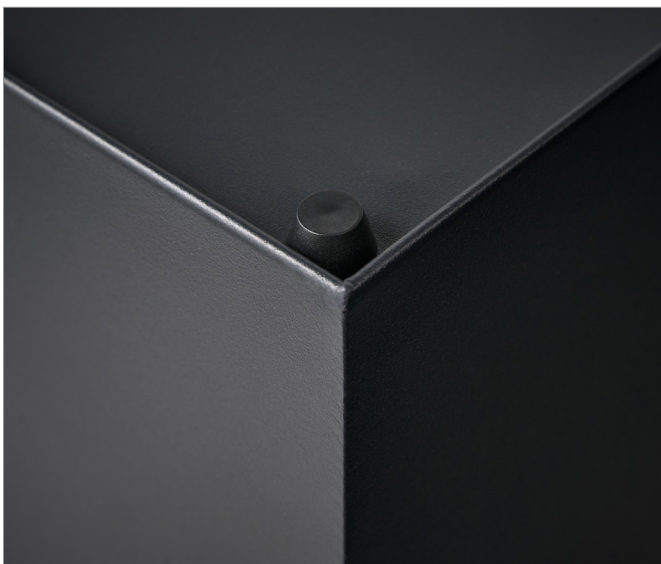
EASY TO
CLEAN



SHEFFIELD

Metal Dual Bin with Plastic Inserts

CORBY



ABOUT THIS PRODUCT

The Sheffield Metal Dual Recycling Bin combines durable steel construction with a refined black finish, delivering a contemporary recycling solution for premium hospitality environments. Designed to enhance both presentation and practicality, it features two removable plastic inserts for efficient waste separation and easy cleaning. Raised feet provide protection for flooring surfaces, while the concealed bag feature preserves the bin's clean, uninterrupted profile. Elegant, functional, and built to last, the Sheffield is a sophisticated addition to any guestroom or shared space.